

PANTHER NEWS



Box 299 | Bentley, AB T0C 0J0 | Phone: 403-748-3770 | Email: bentley@wolfcreek.ab.ca | <https://bentley.wolfcreek.ab.ca>

August 2021

Sunday	Monday	Tuesday	Wednesday	Thursday	Friday	Saturday
--------	--------	---------	-----------	----------	--------	----------

Bentley School Staff would like to wish you all a safe and happy summer holiday!!

The school will be closed for summer holidays beginning July 1, 2021 and will re-open August 27, 2021.

22	23	24	25	26	27 Staff Planning Day	28
29	30 Staff Planning Day	31 Staff Planning Day				
September 2020						
			1	2	3	4
Staggered Start - see schedule inside						

Graduation Tribute

On Saturday, June 26, Bentley School celebrated its 2021 graduates! You can watch the graduation ceremony from our Facebook page - Bentley School Home of the Panthers. Your determination, hard work and perseverance has paid off and we wish you a wonderful future.

Congratulations Class of 2021!



Back to School Information for 2021-2022

Report Cards 2020-2021

All students and parents can access students' marks by logging into your online accounts. Students and parents in Grade 6 - 12 can access marks through PowerSchool (PS) Parent Portal via the school website or by downloading the PowerSchool App. Kindergarten & Elementary students and parents are able to access their final report card by logging into their Freshgrade accounts.

[Click here for complete instructions on how to view your child's marks in PS.](#)

Staggered Entry

Bentley School will start the 2021/2022 year with a staggered start. Students will attend one full day of classes on their assigned day. This enables students time to get settled, introduce routines, get to know their teacher, put away their supplies, etc. The staggered entry schedule is as follows:

Date	Kindergarten 9 a.m. - 11 a.m. No Busing	Grade 1 - 8 8:30 a.m. - 3:15 p.m. Busing Provided	Grade 9 - 12 8:30 a.m. - 3:15 p.m. Busing Provided
Wednesday, September 1	Greed Pod Only	Surname: A - G	Grade 9 Only
Thursday, September 2	Red Pod Only	Surname: H - N	Grade 10 Only
Friday, September 3	Blue Pod Only	Surname: O - Z	Grade 11 & 12 Only

The first full day of school starts **Tuesday, September 7, 2021** for all students.

Homerooms

You will be able to find out your child's homeroom teacher and their room assignment by **Wednesday, August 18**. Login to your PowerSchool account, click the Grades and Attendance tab and look for the homeroom block on their schedule.

Student Pick Up and Drop Off Information

Bright Futures - Main elementary doors

(E1)

Kindergarten - North elementary doors

(E2)

Gr. 1M, 1R & 3M - South elementary doors (E7)

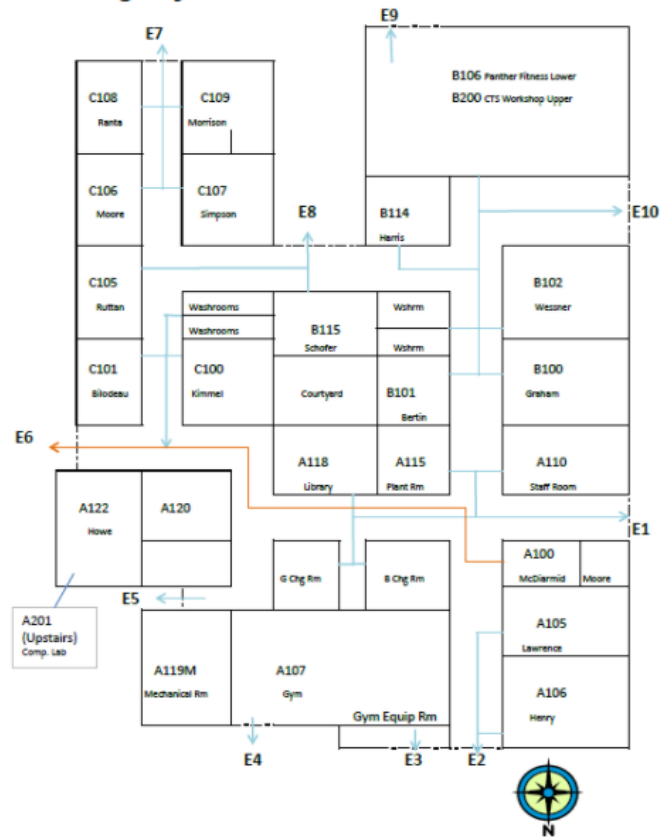
Gr. 2S, 4S & 5R - Alcove South facing elementary doors (E8)

Gr. 5K, 4T & 6H - East elementary doors (E6)

Gr. 7W, 7G & 8B classes - West elementary doors (E10)

Gr 9-12 use the main entrance of the high school.

Bentley School-Elementary Building Emergency Exit Routes



Kindergarten Information Packages

Kindergarten information packages have been emailed out to all parents. You can also find the information on our website at:

<https://bentley.wolfcreek.ab.ca/parents/welcome-to-kindergarten>

Registration for Returning Students Next Year

Returning student registration information will be emailed out towards the end of August and forms must be completed by September 1, 2021.

2021-2022 Calendar

Check out the 2021-20212 calendar at: <https://bentley.wolfcreek.ab.ca/calendar>

Timetables 2021-2022

Junior and Senior High School timetables are available on the school website at: <https://bentley.wolfcreek.ab.ca/students/exam-schedule>.

School Supplies

School supplies and school fees for 2021-2022 are posted on our website at <https://bentley.wolfcreek.ab.ca/parents/school-fees-supply-lists>. School supplies are available to order online through School Start at <https://schoolstart.ca/>. Click the links below for the list.

[Grade 1](#)

[Grade 2](#)

[Grade 3](#)

[Grade 4](#)

[Grade 5](#)

[Grade 6](#)

[Grade 7/8](#)

[Grade 9-12](#)

Staffing Changes for 2021-2022

Due to some staffing changes we were able to increase staffing in the elementary with a half time position enabling us to split the Grade 4 and 5 classes into two full classes for the morning. We are now in the process of hiring a new Jr./Sr. Phys Ed position. Thank you to Miss. Morskate who filled in the for past three months of Miss Allen's maternity leave. Bright Futures educational assistant Sarah Wilson is sadly not returning next year and Miss Merriam who is moving to Carstairs. We wish you all the best in your future endeavors!

2021-2022 Staff Changes

Administrators

Lane Moore, Principal

Stephen Lush, Vice Principal

Teaching Staff

Bright Futures - Christy Lawrence

Kindergarten - Denise Henry

Grade 1M - Kathleen Moore

Grade 1R - Courtney Ranta

Grade 2S - Joanne Simpson

Grade 3M - Lindsay Morrison

Grade 4B - Leesha Bilodeau

Grade 4S - Erin Schofer

Grade 5R - Kelsey Ruttan

Grade 5K - Sheri Kimmel

Grade 6H - Jill Howe

Junior High Science - Travis Wessner

Junior High English - Kelsey Graham

Junior High Math - Jannah Bertin

Mat Leave - Nikki Allen

High School Science - Brittini Turner

High School Math - Kyle Brown

High School English - Suzanne Annable

High School Social - Jason Hazlett

Elem Phys Ed - Pam Stephenson

Jr/Sr Phys Ed - TBD

Support Staff

Marsha Lush - Administrative Assistant

Tammy McDiarmid - Administrative Assistant/Librarian

Amber Harris - School Social Worker

Educational Assistants

Starla Braithwaite

Sandra Cowan

Lyn Garries

Sherry Haarstad

Carmen Hrynyk

Corinne Kamps

Haley Kirsch

Lorna Landry

Laura McKain

Jeanie Morton

Lora Nash

Susan Owens

Darla Park

Joan Ree

Sam Vanak

Vanessa Zinger

Caretakers

Faye Nykolaishyn

Theo Nykolaishyn

Josh Reavie

School Fees 2021-2022



Fees due September 30th, 2021

Pay your school fees online:

Step 1: <https://bentley.wolfcreek.ab.ca>

Step 2: Click on PowerSchool & Online Payment

Step 3: Sign in using your PowerSchool username & password.

We accept cash, cheques, online and debit machine located at the high school office.

Cheques payable to Wolf Creek Public Schools

Base Fees:

Kindergarten: \$70 (includes \$50 school fee, \$20 technology fee)

Gr 1-5: \$20 (\$20 technology fee)

Gr 6-8: \$120 (includes \$60 options, \$30 yearbook, \$20 technology fee, \$10 leadership fee)

Gr 9-11: \$60 (\$30 yearbook, \$20 technology fee, \$10 leadership) + Optional Fees

Gr 12: \$60 (\$30 yearbook, \$20 technology, \$10 leadership) + Optional Fees + Grad Fee TBA

Additional fees may be added through out the year to cover the cost of field trips, swimming lessons, sports fees or clubs.

Optional Course Fees for High School:

(these fees will be added to base fee if your child is taking one of these courses)

Gr 10-12

PE 10-3/20-3/30-3: \$30

PE: 10-5/20-5/30-5: \$40

Cosmetology: \$20

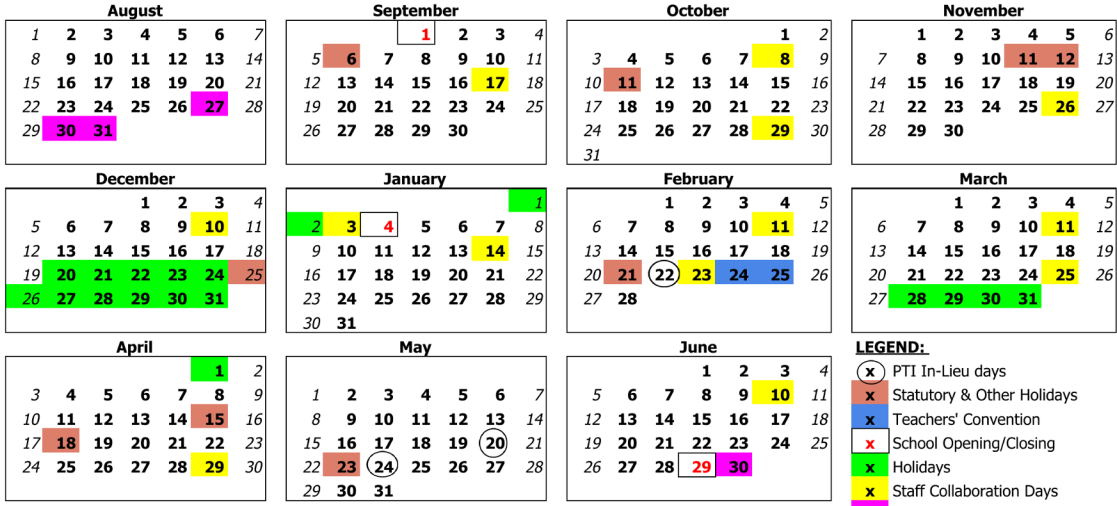
Woods: \$40

Art: \$20

Foods: \$40

WOLF CREEK PUBLIC SCHOOLS
2021 - 2022 School Year
BENTLEY SCHOOL

Su Mo Tu We Th Fr Sa Su Mo Tu We Th Fr Sa Su Mo Tu We Th Fr Sa Su Mo Tu We Th Fr Sa



- LEGEND:**
- x PTI In-Lieu days
 - x Statutory & Other Holidays
 - x Teachers' Convention
 - x School Opening/Closing
 - x Holidays
 - x Staff Collaboration Days
 - x Staff Planning Days

August	Aug. 27, 30, 31	Staff Planning Days
September	Sept. 1	Students' First Day
	Sept. 6	Labour Day Holiday
	Sept. 17	Staff Collaboration Day
October	Oct. 11	Thanksgiving Day Holiday
	Oct. 8 & 29	Staff Collaboration Day
November	Nov. 11	Remembrance Day
	Nov. 12	Day off for students and staff
	Nov. 26	Staff Collaboration Day
December	Dec. 10	Staff Collaboration Day
	Dec. 20	Christmas Holidays (Dec 20 - Jan 2 inclusive)
January	Jan. 3	Staff Collaboration Day
	Jan. 4	First day back after Holiday Break
	Jan. 14	Staff Collaboration Day
	Jan. 28	Conclusion of First Semester
January	Jan. 31	Commencement of Second Semester
February	Feb. 11	Staff Collaboration Day
	Feb. 21	Family Day Holiday
	Feb. 22	Staff Earned Day Off (In-Lieu for Parent-Teacher Interviews)
	Feb. 23	Staff Collaboration Day
	Feb. 24-25	Teacher's Convention
March	Mar. 11	Staff Collaboration Day
	Mar. 25	Staff Collaboration Day
	Mar. 28	Spring Break (March 28 to April 1 inclusive)
April	Apr. 15	Good Friday
	Apr. 18	Easter Monday
	Apr. 29	Staff Collaboration Day
May	May 20	Staff Collaboration Day
	May 23	Victoria Day Holiday
	May 24	Staff Collaboration Day
June	Jun. 10	Staff Collaboration Day
	Jun. 29	Students' Last Day (Conclusion of Second Semester)
	Jun. 30	Teacher Evaluation Day (final staff day)

Note:

Individual schools may have a slightly differentiated number of school days due to higher number of instructional hours per day. Please consult your child's specific school website for further details on a specific school calendar.

VISIT OUR WEBSITE FOR UPDATES





School Start

Back to School with School Start

Order your back to school
supplies online at

schoolstart.ca



Call Centre is Available

Call 1-800-580-1868 to order over the phone or
if you need assistance with online orders.





Dear Parents/Guardians:

Your teachers at Bentley School are excited to offer the opportunity to purchase quality standardized school supplies through School Start for the 2021/2022 school year. This process will save you both time and money.

ORDER EARLY TO WIN!

Order by June 14th, 2021 and you are entered in **all 5 draws!***

The earlier you order, the more you can win as you are also eligible for any draw after your order date!

ORDER by June 14, 2021	ORDER by June 22, 2021	ORDER by June 30, 2021	ORDER by July 15, 2021	ORDER by August 1, 2021
*WIN 1 OF 5 \$100 GIFT CARDS	*WIN A \$500 GAS CARD	*WIN A \$1,000 GROCERY CARD	*WIN \$250 WORTH OF ART LINE PRODUCTS	*WIN \$150 WORTH OF ART LINE PRODUCTS
TO A LOCAL BUSINESS OF YOUR CHOICE!	TO A LOCAL STATION OF YOUR CHOICE!	TO YOUR LOCAL GROCER!	AT SCHOOL START!	AT SCHOOL START!

3 WAYS TO ORDER:



ONLINE: You can place your order online at www.schoolstart.ca.
Our site is best compatible with Firefox or Chrome.



PHONE: You can call our customer service centre at 1-800-580-1868 to place your order over the phone.



EMAIL: You can print and fill out the order form and return to our office via email to: info@schoolstart.ca.

2 DELIVERY OPTIONS:

- **HOME:** The supplies will be packaged and delivered directly to your house. If you have a P.O. Box, please use your 911 address. Because the kit (s) are delivered to your home, you will have the ability to:
 - ✓ Pre-label your child's supplies
 - ✓ Add supplies to your order for home use or for your child in another school
- **SCHOOL:** The supplies will be packaged and delivered directly to the school in August before your child arrives, labeled with their name on the School Start Package.

NEW - NO LATE FEE:

Now you can order any time throughout the spring or summer without any worry of being charged a late fee! We are also open year-round for any additional supplies you may need for your child or home office.

Thank you for your support!



OUR CALL CENTRE IS AVAILABLE if you have any questions or need any assistance ordering online: 1-800-580-1868
www.schoolstart.ca | info@schoolstart.ca | Ph: 1-800-580-1868



Chromebook Parent Purchase Program Information - Parents

Wolf Creek Public Schools is proud of the many ways that our staff and students utilize technology in order to **enhance teaching and learning in our schools**. We have a long history and a proven track record of working with our school communities in order to be able to positively leverage the potential of digital technology tools to support learning. Everyday our schools utilize technology to:

- allow students to show their learning in a wide variety of ways,
- connect students with each other within their classroom, within the division, within the province and around the world.
- connect students and teachers with experts in various fields such as authors, astronauts, scientists,
- support students with a wide variety of learning styles and needs,
- and more!

Bring Your Own Device Program

Wolf Creek Public Schools believes that students should be able to bring their own device to school with them to support their learning. We are proud to have been promoting this kind of learning support for our students since 2009. Students across our division benefit from ready access to school owned technology, but we have found over years of observation and working with our students that students feel most comfortable with, and often are able to best support their learning with, a device that they personally own.

Our parents have been very supportive of this evolution of a bring your own device approach in Wolf Creek. In many schools as parents seek to provide support for their children as they learn in today's classrooms, our teachers and administrators have been fielding parent questions around "what kind of a device should I purchase for my child"?

History and Background

Back in 2011, Wolf Creek School division piloted the first use of Chromebooks and Google Apps for Education in our schools. This pilot quickly grew as we received feedback from students, teachers, administrators, and parents around the potential for this kind of device to purposefully support student learning. In 2012, we introduced the Parent Purchase Program to our Wolf Creek Schools and this initiative has been taken advantage of by over 1000 Wolf Creek families since that time.

Through a partnership with a well known manufacturer of Chromebooks, Wolf Creek Public Schools has been able to develop an online process whereby we can pass along special pricing to our families on Chromebooks. While it may be true that our families will be able to occasionally find lower pricing on similar devices at a sale at a nearby retailer, by purchasing through our online process parents can be assured that the devices they purchase will work within Wolf Creek's network environment and be set up and delivered to their student's school by our vendor partner.

Online Purchase Process

Wolf Creek Public Schools is excited to be working with **BCom Computer**, as the reseller of Chromebooks, to continue offering the Chromebook Parent Purchase Program for our Wolf Creek families through an online Parent Purchase Program website.

In partnership with Wolf Creek, BCom Computer has built a Wolf Creek Public Schools online store specifically for our families which provides the ability to purchase a selection of Chromebooks, accessories and warranty options which have been chosen because they fit in well with our Wolf Creek context.

Families wishing to purchase a Chromebook through this program will need to visit www.b-com.ca/wolfcreek/home.php in order to create a parent shopping and payment profile.

**Click here for step by step instructions on how to use the
Parent Purchase Program website.**

Frequently Asked Questions

2021-2022 Registration is Open for K - 12

We are excited to welcome new children and families to our school in the coming year!

Please Note:

- A copy of the original birth certificate and other legal documentation (custody orders, etc.) need to accompany registration or comment to when you will be able to submit them. If you need to order your child's birth certificate, click on the link to Alberta Services.
- Kindergarten class placements are based on a number of factors including, number of kindergarten registrations received, date kindergarten registration received, program day availability and student needs, not just on parent preference.
- Be sure to select the 2021-2022 Registration Form
- If you are a rural student, please remember to register for busing!



Age Requirement: Kindergarten students must be 5 years of age by December 31, 2021 to register for the 2021/2022 school year. (Wolf Creek Public Schools Policy #300).

Questions? Having trouble registering during school hours? We will be happy to help! Please call the office at 403-748-3770.

Returning Students: Students who are currently registered with Bentley School will be asked to submit a returning student registration form at the end of August. An email notice will be sent out to parents at that time and parents will be able to access the form through their parent portal.



RURAL SCHOOL BUS STUDENTS

Students who live in the country and are new to rural busing OR have moved to a new rural location are required to register for transportation.

All rural kindergarten students must be registered to ride the bus.

Your full legal land description AND complete blue sign (911 address) are required to register.

**Unsure of which school your child should attend, please call us with your legal land description.*

If you have moved you must notify the school of the address change prior to registering for busing.

**Cross boundary students must re-apply each year by filling out the regular application and the cross boundary application. Please note that cross boundary fees will apply.*

**REGISTER ONLINE USING YOUR PARENT PORTAL
OR THROUGH SCHOOLENGAGE**

DEADLINE FOR REGISTERING IS JUNE 15, 2021

For more information please contact Wolf Creek Public Schools Transportation Services

E-mail - transportation@wolfcreek.ab.ca

Phone - 403-785-0726 (Direct) or 403-341-4153 (Red Deer) or 403-782-8726 (Lacombe) ext. 1332

Website - <https://www.wolfcreek.ab.ca/school-division/transportation/bus-status-page2>

Bentley School

Registration

Register soon as spots are filling up!

PRE-KINDERGARTEN PROGRAM HIGHLIGHTS INCLUDE

- ◆ Certified Classroom Teacher and Experienced Support Staff
- ◆ A Focus on Excellence in Developing the Whole Child
- ◆ Developing Skills Intellectually, Artistically, Emotionally, Physically and Socially
- ◆ Access to Support Services: Occupational Therapy, Physical Therapy and Speech and Language Services
- ◆ Family Orientated Programming and Partnership with Community Programming

TWO and FOUR HALF DAY PROGRAMS for 3 & 4 YEAR OLDS AVAILABLE

Program times and offering will vary from school to school

- ◆ Monday/Wednesday mornings
- ◆ Tuesday/Thursday mornings



Wolf Creek Public Schools




REGISTER
Online

Jan 6, 2020





www.brightfuturesplayacademy.ca

email: brightfutures@wolfcreek.ab.ca Ph: 403.783.5441 Ext 1340



Tools for School

 APPLICATIONS ARE NOW AVAILABLE FOR
THE 2021-2022 SCHOOL YEAR.

Apply in July 

Apply in office or online:

2nd floor of the Lacombe Memorial Centre

www.lacombefcss.net 403-782-6637

